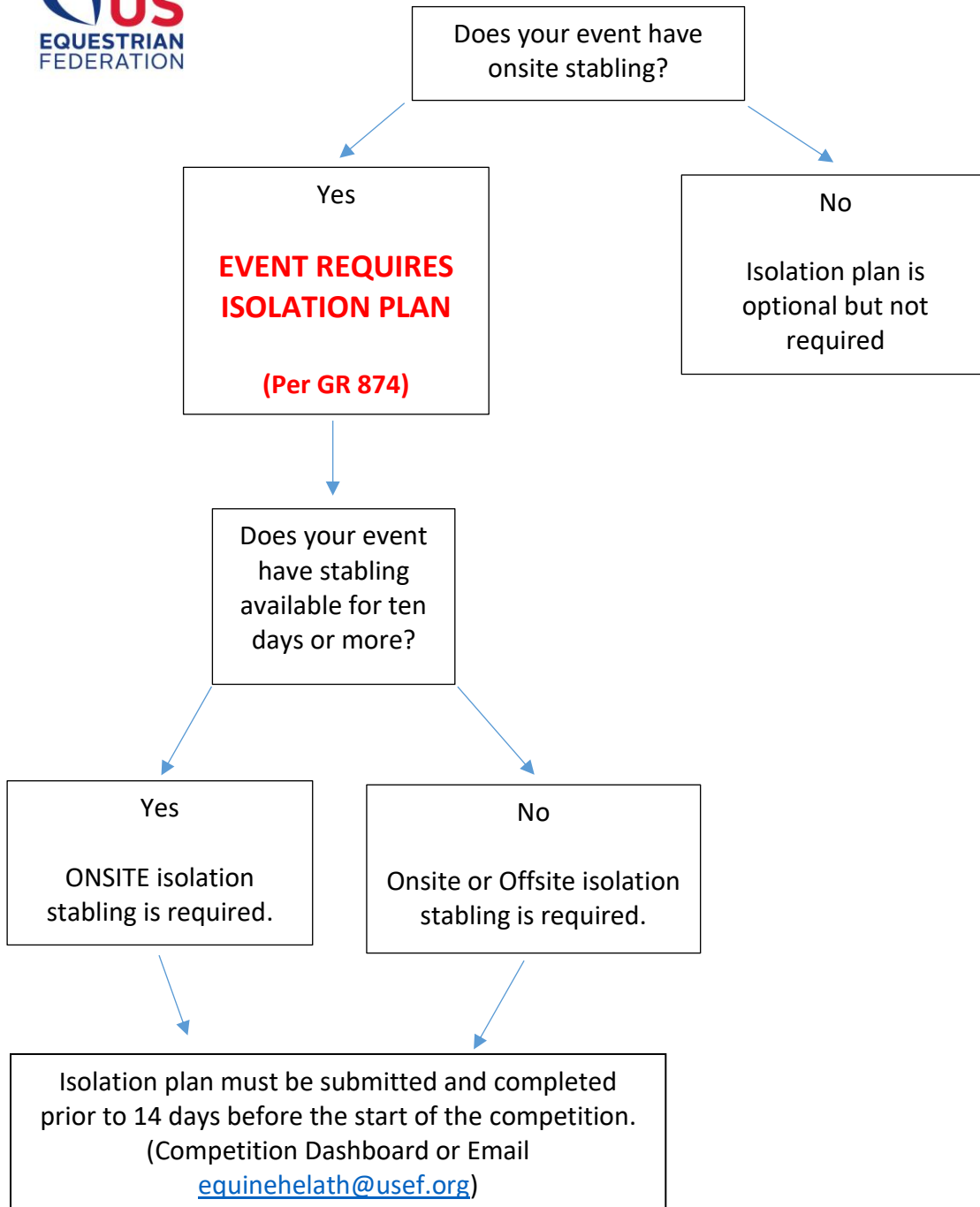




Does Your Event Need an Isolation Plan?



Per GR 874, All competitions that have onsite stabling of competition horses must have in place a written isolation protocol for horses. The isolation plan must be submitted to the Federation no later than 14 days prior to the start of the competition. The isolation plan must include at a minimum the requirements enumerated in the Federation's template isolation plan available on the Federation's website.

An onsite isolation stabling plan is required if the Licensee of a competition is hosting competition(s) over more than ten consecutive days at the same location. For purposes of this rule, the ten consecutive days begin the first day stabling is open for horses entering the competition venue. The number of isolation stalls required is equivalent to one percent of the previous year's horse count up to a maximum of ten isolation stalls, if the competition has more than 1,000 horses.

If offsite isolation stabling is contemplated in the isolation plan, an agreement between competition management and the isolation facility is required.





Onsite Isolation Stabling Requirements Checklist

(The information below will be needed to complete isolation plan template per GR 874)

- Name of person responsible for isolation oversight (cell phone, email)
- Horse count for previous event
 - Determines number of isolation stalls needed (should be 1% of previous count or max of 10 stalls for 1000 horses)
- Location of isolation stabling
 - Include map
 - Is isolation stabling in a separate structure from competition stabling (yes/no)
 - Is isolation stabling outside of general horse/human/vehicle traffic routes (yes/no)
 - Are isolation stalls immediately available (yes/no)
 - Signage is posted designating restricted access (yes/no)
- Perimeter fencing (choose one)
 - Isolation perimeter has permanent or temporary fencing to enclose
 - Isolation stabling does not have perimeter fencing
- Type of isolation stalls
 - Do all stalls have at least 3 solid walls a minimum of 8 ft tall (yes/no)
 - Surface of stalls (choose one): cement, plastic, vinyl/canvas, metal bars, wood, other-explain
 - Stall flooring (choose one): cement, rubber mats, dirt, other-explain
- Isolation supplies
 - Separate dedicated stall cleaning equipment in isolation (yes/no)
 - Separate dedicated feeding equipment in isolation (yes/no)
 - Water and electrical supply is in close proximity to isolation (yes/no)
 - Source of disposable gloves/booties/coveralls: Name, address, contact information
 - Location of storage of isolation supplies: Describe where onsite the supplies are stored
- Disinfection
 - What product is used, choose from drop down box (see list)
 - Are stalls cleaned and disinfected before each event (yes/no)
- Vector Control
 - Fly control drop down: fogger, mister/sprayer system, fly spray, fly parasites around manure, fly traps, fly tapes (select all that apply)
 - How often does vector control company visit: daily, weekly, monthly, annually, when called, unknown
 - Are rodent traps used in isolation stabling (yes/no)
 - Is feed stored in sealed bins (yes/no)
 - Is hay stored off the ground (yes/no)

Isolation Template document can be found on the [USEF Isolation Plan Resources Page](#) and can be submitted to equinehealth@usef.org or information can be entered online using the competition dashboard Isolation Plan Icon.

