



# Avenches

# CCI04\*-NC-S

Avenches, Switzerland

JULY 16-19, 2026

Untargeted  
Nations Cup



*Disclaimer: This Playbook is a resource produced by the USEF Eventing Department. Please visit the event's [FEI Schedule](#) for the most up to date information.*

## **SPONSORS**

### **US EQUESTRIAN TEAM**

Thank you to our generous sponsors who help our Teams compete at the FEI Nations Cups:

USET Foundation and its generous donors

USOPC

USEF Sponsors and Members

For a full list of USEF Sponsors please visit: [www.usef.org](http://www.usef.org)



## **THIS PLAYBOOK IS PRODUCED BY THE USEF EVENTING DEPARTMENT.**

IOC – International Olympic Committee

USEF – United States Equestrian Federation

USET – United States Equestrian Team Foundation

USOPC – United States Olympic and Paralympic Committee

USADA – United States Anti-Doping Agency

*Disclaimer: This Playbook is a resource produced by the USEF Eventing Department. Please visit the event's [FEI Schedule](#) for the most up to date information.*

## Table of Contents

INTRODUCTION.....	4
APPLICATIONS .....	5
ENTRIES .....	5
APPLICATION AND SELECTION TIMELINE.....	5
SELECTION PROCEDURES .....	5
FUNDING .....	5
PRE-TRAVEL INFORMATION .....	6
VISAS .....	6
VACCINATIONS .....	6
TRAVEL INFORMATION.....	6
EQUINE TRANSPORTATION .....	6
HUMAN TRANSPORTATION.....	7
HUMAN ACCOMMODATION .....	7
CAR SERVICE INFORMATION .....	7
USA EVENTING GUIDE TO TRAVELING OVERSEAS .....	7
ACCREDITATION.....	7
APPAREL .....	7
TICKETS.....	8
VENUE .....	8
STABLES .....	8
TACK ROOMS.....	8
COMPETITION SCHEDULE .....	8
TEAM STAFF.....	8
SAFE SPORT, CODE OF CONDUCT, & CLEAN SPORT .....	8
HORSE .....	8
ATHLETE.....	8
PRESS & MEDIA .....	9
SOCIAL MEDIA.....	9
HOSPITALS & EMERGENCY SERVICES.....	9
INCIDENT MANAGEMENT GUIDELINES.....	9

*Disclaimer: This Playbook is a resource produced by the USEF Eventing Department. Please visit the event's [FEI Schedule](#) for the most up to date information.*

ABOUT AVENCHES.....	11
LANGUAGE .....	11
ELECTRICAL.....	11
TELEPHONES, WI-FI, AND INTERNET ACCESS.....	11
WEATHER .....	11
FOOD AND LOCAL RESTAURANTS .....	12
LOCAL BUSINESS HOURS .....	12
GETTING AROUND THE TOWN.....	13
CURRENCY AND EXCHANGE.....	13
CREDIT CARDS .....	13
TIPPING .....	13
TRAVELERS CHECKS .....	13

*Disclaimer: This Playbook is a resource produced by the USEF Eventing Department. Please visit the event's [FEI Schedule](#) for the most up to date information.*

# UNTARGETED NATIONS CUP: AVENCHES

## US EQUESTRIAN TEAM PLAYBOOK

### INTRODUCTION

The aim of the Playbook is to give those who are attending the Avenches (SUI) CCI04\*-NC-S an understanding of the logistical support that is available through USEF. As an Untargeted Nations Cup, please note that the Team will not receive funding, apparel, Team Staff support, or expense reimbursements.

As with any Nations Cup, Avenches will have its challenges and differences from other Nations Cups. The emphasis must be on ensuring our athletes, horses, and grooms can perform their very best. A performance environment must be maintained and always keep in mind that even if you are not on a U.S. Eventing Team, you are still representing the USA at these European competitions.

The competition venue is approximately 25 miles (30 minutes) west of Bern and will be hosting additional levels and divisions. This is not a stand-alone Nations Cup and additional divisions will run alongside the CCI04\*-NC-S. Please review the published [FEI Schedule](#) for the available divisions and their restrictions.

We are continually receiving updates and new information so this playbook can never cover all the details. The primary point of contact is Christina Vaughn, and her contact information can be found below.

This playbook contains helpful information for attending this event. Please also familiarize yourself with the [FEI Schedule](#) and remember to check in at the show office upon arrival for the most up-to-date information.

**PLEASE READ THIS PLAYBOOK AS IT CONTAINS IMPORTANT INFORMATION ABOUT TRAVEL PLANNING, CLIMATE, AND ACCOMMODATIONS.**

Please contact Christina if you have any questions, observations, or suggestions as to how we can optimize the support of the athletes, grooms, and horses.

Good luck to all!

*Christina Vaughn*

**Christina Vaughn**

**Director, Eventing Elite Programs**

**T: +1 (859) 225-6917**

**E: [cvaughn@usef.org](mailto:cvaughn@usef.org)**

*Disclaimer: This Playbook is a resource produced by the USEF Eventing Department. Please visit the event's [FEI Schedule](#) for the most up to date information.*

## APPLICATIONS

### ENTRIES

In the [USEF Athlete Dashboard](#), athletes must complete both an Online Application and an FEI Entry.

**Online Applications are required for selection to a Team.** The Online Application section allows athletes to apply for selection to a CCIO at which the U.S. will field a Team. This process is managed by USEF Eventing. Additionally, as an untargeted Nations Cup, **the Athlete will also need to submit an entry through the FEI Entry System.** If a Team is named for this event, USEF will pay for the Nations Cup Entry Fee.

**An FEI Entry is required to compete as an Individual.** Athletes must submit the FEI Entry in order to be entered into the FEI Entry System to compete as an individual at any FEI competition, whether in the U.S. or abroad. The FEI Entry process is managed by US Equestrian Athlete Services.

Entries must be paid as outlined in Section VII of the [FEI Definite Schedule](#).

### APPLICATION AND SELECTION TIMELINE

**Applications Open:** January 1, 2026, at 9:00 a.m. EST

**Application Close and Team Selection:** Event entries and applications will be monitored to determine if there is enough interest to field a U.S. Team. If you are interested in being considered for the Team, please get in touch with Christina Vaughn at [cvaughn@usef.org](mailto:cvaughn@usef.org) or +1 (859) 225-6917 for the next steps.

### SELECTION PROCEDURES

As an Untargeted Nations Cup, the Avenches Nations Cup team follows the [2026 Untargeted Team Opportunities Selection Procedures](#).

## FUNDING

As an Untargeted Nations Cup, Athletes named to the Avenches Nations Cup U.S. Team will not receive funding.

USEF will cover the National Federation fee and FEI Entry fee for the Team.

## PRE-TRAVEL INFORMATION

### VISAS

U.S. citizens and non-E.U. nationals will need to complete the Entry/Exit System (EES) for all short-term stays in European countries. Registration and biometric data collection will be completed at a border control kiosk at the arrival airport. More information about EES can be found [here](#). It is the traveling individual's responsibility to check any visa requirements.

### VACCINATIONS

In accordance with the CDC and USOPC recommendations, we advise that all Athletes, grooms, and traveling USEF support staff consider getting the new COVID vaccine now available against new strains as well as the seasonal flu vaccine. These vaccines can be administered at the same time. This is NOT a USOPC or USEF requirement, but it is highly recommended to protect our athletes, grooms, and all Team members. Please note it takes approximately two (2) weeks to maximize immunity.

## TRAVEL INFORMATION

### EQUINE TRANSPORTATION

It is the athlete's responsibility to organize their horse's travel to the event. Christina Vaughn is available for assistance.

**USA to SUI:** Dutta Horse Transport Inc is the recommended vendor for horse flights departing the continental United States.

- [Website](#)
- Phone: +1 (914) 276 3880
- Email: [info@timdutta.com](mailto:info@timdutta.com)

**Ground Transportation:** Gelissen's Horse Transport is the preferred USEF vendor for ground transportation within continental Europe.

- [Website](#)
- Phone: +31 (0)46 437 35 74
- Email: [info@horse-transport.nl](mailto:info@horse-transport.nl)

**SUI to USA:** Guido Klatte GmbH & Co.KG is the recommended vendor for horse flights departing Germany.

- [Website](#)
- Phone: +49 (0) 44 72 / 94 00 70
- Email: [guido@gklatte.de](mailto:guido@gklatte.de)

**Hay/Bedding:** Please refer to the [FEI Schedule](#) for hay/bedding that is available at the venue.

*Disclaimer: This Playbook is a resource produced by the USEF Eventing Department. Please visit the event's [FEI Schedule](#) for the most up to date information.*

## HUMAN TRANSPORTATION

All athletes, grooms, and owners are responsible for booking their own travel itinerary. Below is a the recommended airport to Avenches.

**Geneva Airport (GVA)** has two terminals that operates both international and domestic flights. It is approximately 73 miles (75 minutes) from the competition venue.

## HUMAN ACCOMMODATION

There are many local accommodation options. Below is a non-extensive list of nearby hotels. It is the traveling individual's responsibility to book their accommodation.

Requests for groom's accommodation must be sent with the entries.

Hotel	Website	Distance
La Couronne	<a href="#">Click here</a>	1.9 mi
Auberge de la Croix-Blanche	<a href="#">Click here</a>	3.6 mi
Hôtel Restaurant Lacotel	<a href="#">Click here</a>	4.0 mi
Château Salavaux	<a href="#">Click here</a>	4.1 mi
Studios FAOUG	<a href="#">Click here</a>	7.7 mi

## CAR SERVICE INFORMATION

**Public Transport:** There is public transport in Switzerland and a bus stop located 0.5 miles (11 minute walk) from the competition venue.

**Taxi:** Taxis use meters calculated by distance and time.

**Rental Vehicles:** For automatic vehicles, it is recommended to book a rental car with a large rental agency.

## USA EVENTING GUIDE TO TRAVELING OVERSEAS

To view the USA Eventing Guide to Traveling Overseas click [here](#).

## ACCREDITATION

Please review the [FEI Schedule](#) for the most up-to-date information on available accreditations.

## APPAREL

As an Untargeted Nations Cup, athletes, grooms, and owners will not receive horse or human apparel from USEF.



*Disclaimer: This Playbook is a resource produced by the USEF Eventing Department. Please visit the event's [FEI Schedule](#) for the most up to date information.*

## TICKETS

Tickets will not be sold for spectators to attend the event.

## VENUE

The equestrian venue is southwest of the center of Bern.

The venue address is **Les Longs-Prés 1580 Avenches Switzerland**

## STABLES

Stable boxes are 3.5m x 3.5m.

## TACK ROOMS

Tack rooms are available on request. It is the athlete's responsibility to coordinate with the entry.

## COMPETITION SCHEDULE

The full schedule for the Avenches Horse Trials can be found [here](#).

## TEAM STAFF

As an Untargeted Nations Cup, Eventing Team Staff are not available for the duration of the competition.

## SAFE SPORT, CODE OF CONDUCT, & CLEAN SPORT

Similar to any USEF licensed Event, SafeSport, the USEF Code of Conduct and Clean Sport must be abided by at all times.

Click [here](#) for SafeSport Information

Click [here](#) for USEF Code of Conduct

Click [here](#) for Clean Sport Information

## HORSE

Once a horse is named to a Team all communication regarding treatments and medications is to be directed to the team veterinarian. No medications can be transported with the horses.

## ATHLETE

Once an athlete is named to a Team it is important that any Therapeutic Use Exemptions (TUEs) are up to date and with the athlete at all times. If there are any questions regarding medications

*Disclaimer: This Playbook is a resource produced by the USEF Eventing Department. Please visit the event's [FEI Schedule](#) for the most up to date information.*

please reach out to Steven Morrissey ([smorrissey@usef.org](mailto:smorrissey@usef.org)) or Dr. Mark Hart ([markvhart@gmail.com](mailto:markvhart@gmail.com)).

## PRESS & MEDIA

### SOCIAL MEDIA

Social media can be a great advantage for athletes, but it can also be detrimental to the Team and to the environment. Please familiarize yourself with the policies below.:

The FEI Social Media policy can be found [here](#).

The USEF Social Media policy can be found [here](#).

If you have any questions about the utilization of social media during the Nations Cup, please contact Sr. Director Social Media & Sport Communications, Carly Weilminster ([cweilminster@usef.org](mailto:cweilminster@usef.org)).

## HOSPITALS & EMERGENCY SERVICES

Name	Address	Phone
Hospital Intercantonal De La Broye	Rue de l'Hôpital 1, 1470 Estavayer-le-Lac, Switzerland	+41 26 664 71 11
Hôpital intercantonal de la Broye - site de Payerne	Av. de la Colline 3, 1530 Payerne, Switzerland	+41 26 662 80 11
HFR Fribourg – Cantonal Hospital	Chem. des Pensionnats 2/6, 1752 Villars-sur-Glâne, Switzerland	+41 26 306 00 00

**Swiss Emergency Services – 112**

### INCIDENT MANAGEMENT GUIDELINES

In general, Switzerland is a safe country for its residents and visitors. However, security perception changes greatly by district. If you have any doubts or need to report an incident, you can rely on the Police.

Responsible care should be exercised when traveling throughout Switzerland. There is a normal level of crime in Avenches, but it varies by district. Travelers should keep valuables out of sight and be aware of their surroundings. Avoid isolated areas when on foot, especially after dark. It is recommended to only use a trusted taxi or an app-based taxi service. Do not hail a taxi on the street.

Assailants usually target victims for their smartphones, wallets, or purses. If confronted by someone with a weapon, it is best not to resist.

*Disclaimer: This Playbook is a resource produced by the USEF Eventing Department. Please visit the event's [FEI Schedule](#) for the most up to date information.*

It is best to use ATMs inside banks instead of ATMs that are more accessible to passers-by and all banks advise customers to cover ATM keypads with their hands when entering codes. When making credit card transactions, travelers should expect the vendor to use a credit card reader in their presence.

There is a threat of low-level crime such as mugging and theft. Security is not a worry, but all should be aware and take realistic precautions.

Security is the responsibility of everybody. However, security concerns must not be allowed to prevent Athletes from concentrating on preparing and competing their horses. Good security is the application of common sense.

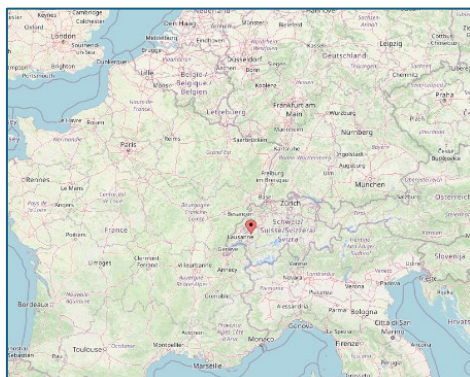
The key to good security is vigilance. Be aware of what is happening around you and always pay attention to anything that appears unusual or out of place. This includes people who appear nervous about their surroundings.

- Make a copy of your passport and travel documents and leave the original in a safe place.
- Always travel in groups.
- Do not overtly wear expensive jewelry.
- Keep your phone hidden.
- Do not carry excessive amounts of cash or credit cards if you do not need them.
- If you are in a vehicle in standstill traffic with the windows rolled down, keep phones and other possessions low and away from windows and be mindful of people walking through the traffic.
- Do not approach unattended bags, cases, or packages – report them.
- Do not accept packages from anyone, the contents of which are unclear.
- Do not advertise where members of Team USA are staying.
- If you are out in the evening and you become aware of increased police activity, leave the area immediately.
- If you see an incident involving the police, do not get involved. Do not play the good Samaritan.
- Avoid wearing Team USA kits outside protected areas.

**TELEPHONE NUMBER FOR THE SWISS POLICE – 112**

*Disclaimer: This Playbook is a resource produced by the USEF Eventing Department. Please visit the event's [FEI Schedule](#) for the most up to date information.*

## ABOUT AVENCHES



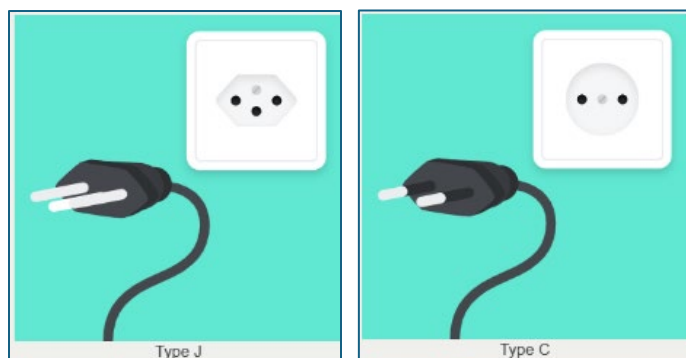
Avenches is located in western side of Switzerland in the canton of Vaud and the district of Broye-Vully. It is a small town of 4,477 people with only 32.9% of it's residents being foreign nationals as of 2008. More information about Avenches can be found [here](#).

## LANGUAGE

Switzerland has four different official languages: German (60% of the population), French (22% of the population), Italian (8% of the population), and Romansh (0.5% of the population). Although not an official language of the country, 45% of the population in Switzerland speak English regularly.

## ELECTRICAL

Power in Switzerland operates on a 230-volt current and a 50 hertz frequency. Electricity will be supplied through a Type C (rounded two-prong) or Type J (rounded three-prong).



## TELEPHONES, WI-FI, AND INTERNET ACCESS

Cellphone reception is typically good. Most of the country is covered with 5G systems. Contact your phone provider for more information on Sim Cards and International Data Plans. Quality of service can vary by region, specifically in the mountains.

## WEATHER

Average weather for June

- High Temperature: 69°F
- Low Temperature 54°F
- Rainfall: 5.09"

*Disclaimer: This Playbook is a resource produced by the USEF Eventing Department. Please visit the event's [FEI Schedule](#) for the most up to date information.*

- Humidity: 72%

**Suggested Clothing:** June is considered the best time of year to visit Switzerland. Although having pleasant summer temperatures, it is still recommended to bring a light jacket and waterproof clothing as it is a rainy time of year.

## FOOD AND LOCAL RESTAURANTS

While tap water is considered safe to drink in Switzerland, it is best practice to utilize bottled water instead. Stay away from raw foods and un-bottled drinks, unless in a reputable restaurant as a precaution.

Swiss cuisine is heavily influenced by cheese, bread, sausages, and is known for its chocolate. Although labeled as, "Swiss cuisine," the country has adopted many different ingredients and recipes from neighboring countries and cultures.

Some popular dishes include:

- Rösti
- Fondue
- Raclette
- Zürcher Geschnetzeltes
- Älplermagronen
- Malakoff
- Polenta ticinese
- Bündner Nusstorte

There are many local restaurant options. Below is a non-extensive list of nearby restaurants.

Restaurant	Address	Distance
Restaurant Le Paddock	Les Longs-Prés 1A, 1580 Avenches, Switzerland	On Venue
Café de la Banque	Rue Centrale 44, 1580 Avenches, Switzerland	1.8 mi
Restaurant Hôtel de Ville Avenches	Rue Centrale 33, 1580 Avenches, Switzerland	1.9 mi
La Vendetta	Rue Centrale 2, 1580 Avenches, Switzerland	2.0 mi
Restaurant des Bains	Rte de Berne 1, 1580 Avenches, Switzerland	2.3 mi

## LOCAL BUSINESS HOURS

**Office hours** are typically Monday through Friday from 8:00 a.m. to 5:30 p.m.

**Banks** depend on location and institution and their branches. Most banks are open from 8:00 a.m. to 5:00 p.m. Monday through Friday.

*Disclaimer: This Playbook is a resource produced by the USEF Eventing Department. Please visit the event's [FEI Schedule](#) for the most up to date information.*

**Shopping centers** tend to be open Monday through Friday from 9:00 a.m. to 6:30 p.m. On the weekends, stores are typically open 9:00 a.m. to 5:00 p.m. on Saturday and are closed on Sundays.

## GETTING AROUND THE TOWN

There are apps that can be utilized in the town of Avenches to request a vehicle such as Uber, Lyft, Ola, and Didi.

The advised and safest method of travel is by taxi or car arranged by a hotel.

## CURRENCY AND EXCHANGE

The Swiss franc (CHF) is the official currency of Switzerland. The symbol for the franc is ₣. Currency exchange locations are available in towns outside of Avenches including Ria Money Transfer & Currency Exchange, Capital Services Payerne, and Coop Caisse de dépôts Fribourg.

Currency slang includes but is not limited to:

- Swiss franc – “Swissie”

## CREDIT CARDS

Major credit cards are widely accepted. Use of debit cards is widespread, although some stores may impose a minimum per debit card purchase, and service charges may apply.

Money can be exchanged at the airport, exchange houses or banks.

## TIPPING

**Restaurants:** Tipping is customary at a 10% to 15% rate. If your bill includes a service charge,

**Transport:** Tipping taxi drivers is not required however it is appreciated. An appropriate tip would be considered to round up to the nearest franc.

**Hotels:** Tipping at hotels is customary at a 10% - 20% rate.

## TRAVELERS CHECKS

Traveler's checks are not commonly used in Switzerland. It is best to use an ATM card at the many ATM locations available in Avenches.