

Gestüt Marbach

CCI04*-NC-S

Marbach, Germany

MAY 13-17, 2026

**Untargeted
Team Event**



Disclaimer: This Playbook is a resource produced by the USEF Eventing Department. Please visit the event's [FEI Schedule](#) for the most up to date information.

SPONSORS

US EQUESTRIAN TEAM



Thank you to our generous sponsors who help our Teams compete at the FEI Nations Cups:

USET Foundation and its generous donors

USOPC

USEF Sponsors and Members

For a full list of USEF Sponsors please visit: www.usef.org

THIS PLAYBOOK IS PRODUCED BY THE USEF EVENTING DEPARTMENT.

IOC – International Olympic Committee

USEF – United States Equestrian Federation

USET – United States Equestrian Team Foundation

USOPC – United States Olympic and Paralympic Committee

USADA – United States Anti-Doping Agency

Disclaimer: This Playbook is a resource produced by the USEF Eventing Department. Please visit the event's [FEI Schedule](#) for the most up to date information.

Table of Contents

INTRODUCTION	4
APPLICATIONS	5
ENTRIES	5
APPLICATION AND SELECTION TIMELINE.....	5
SELECTION PROCEDURES	5
FUNDING	5
PRE-TRAVEL INFORMATION	6
VISAS	6
VACCINATIONS	6
TRAVEL INFORMATION.....	6
EQUINE TRANSPORTATION	6
HUMAN TRANSPORTATION.....	7
HUMAN ACCOMMODATION	7
CAR SERVICE INFORMATION	7
USA EVENTING GUIDE TO TRAVELING OVERSEAS	7
ACCREDITATION.....	7
APPAREL	8
TICKETS.....	8
VENUE	8
STABLES	8
TACK ROOMS	8
COMPETITION SCHEDULE	8
TEAM STAFF.....	8
SAFE SPORT, CODE OF CONDUCT, & CLEAN SPORT	8
HORSE	8
ATHLETE.....	9
PRESS & MEDIA.....	9
SOCIAL MEDIA.....	9
HOSPITALS & EMERGENCY SERVICES.....	9
INCIDENT MANAGEMENT GUIDELINES.....	9
ABOUT MARBACH	11

Disclaimer: This Playbook is a resource produced by the USEF Eventing Department. Please visit the event's [FEI Schedule](#) for the most up to date information.

LANGUAGE	11
ELECTRICAL.....	11
TELEPHONES, WI-FI, AND INTERNET ACCESS.....	11
WEATHER	11
FOOD AND LOCAL RESTAURANTS	12
LOCAL BUSINESS HOURS	12
GETTING AROUND THE CITY	13
CURRENCY AND EXCHANGE.....	13
CREDIT CARDS	13
TIPPING	13
TRAVELERS CHECKS	13

Disclaimer: This Playbook is a resource produced by the USEF Eventing Department. Please visit the event's [FEI Schedule](#) for the most up to date information.

UNTARGETED NATIONS CUP: GESTÜT MARBACH

US EQUESTRIAN TEAM PLAYBOOK

INTRODUCTION

The aim of the Playbook is to give those who are attending the Gestüt Marbach (GER) CCI04*-NC-S an understanding of the logistical support that is available through USEF. As an Untargeted Nations Cup, please note that the Team will not receive funding, apparel, Team Staff support, or expense reimbursements.

As with any Nations Cup, Gestüt Marbach will have its challenges and differences from other Events. The emphasis must be on ensuring our athletes, horses, and grooms can perform their very best. A performance environment must be maintained and always keep in mind that even if you are not on a U.S. Eventing Team, you are still representing the USA at these European competitions.

The competition venue is approximately an hour southeast of Stuttgart and will be hosting additional levels and divisions. This is not a stand-alone Nations Cup and additional divisions will run alongside the CCI04*-NC-S. Please review the published [FEI Schedule](#) for the available divisions and their restrictions.

We are continually receiving updates and new information so this playbook can never cover all the details. The primary point of contact is Christina Vaughn, and her contact information can be found below.

This playbook contains helpful information for attending this Event. Please also familiarize yourself with the [FEI Schedule](#) and remember to check in at the show office upon arrival for the most up-to-date information.

PLEASE READ THIS PLAYBOOK AS IT CONTAINS IMPORTANT INFORMATION ABOUT TRAVEL PLANNING, CLIMATE, AND ACCOMMODATIONS.

Please contact Christina if you have any questions, observations, or suggestions as to how we can optimize the support of the athletes, grooms, and horses.

Good luck to all!

Christina Vaughn

Christina Vaughn
Director, Eventing Elite Programs
T: +1 (859) 225-6917
E: cvaughn@usef.org

Disclaimer: This Playbook is a resource produced by the USEF Eventing Department. Please visit the event's [FEI Schedule](#) for the most up to date information.

APPLICATIONS

ENTRIES

In the [USEF Athlete Dashboard](#), athletes must complete both an Online Application and an FEI Entry.

Online Applications are required for selection to a Team. The Online Application section allows athletes to apply for selection to a CCIO at which the U.S. will field a Team. This process is managed by USEF Eventing. Additionally, as an untargeted Nations Cup, **the athlete will also need to submit an entry through the FEI Entry System.** If a Team is named for this event, USEF will pay for the Nations Cup Entry Fee.

An FEI Entry is required to compete as an Individual. Athletes must submit the FEI Entry in order to be entered into the FEI Entry System to compete as an individual at any FEI competition, whether in the U.S. or abroad. The FEI Entry process is managed by US Equestrian Athlete Services.

Entries must be paid as outlined in Section VII of the [FEI Definite Schedule](#).

APPLICATION AND SELECTION TIMELINE

Applications Open: January 1, 2026, at 9:00 a.m. ET

Application Close and Team Selection: Event entries and applications will be monitored to determine if there is enough interest to field a U.S. Team. If you are interested in being considered for the Team, please get in touch with Christina Vaughn at cvaughn@usef.org or +1 (859) 225-6917 for the next steps.

SELECTION PROCEDURES

As an Untargeted Nations Cup, the Gestüt Marbach Nations Cup team follows the [2026 Untargeted Team Opportunities Selection Procedures](#).

FUNDING

As an Untargeted Nations Cup, Athletes named to the Gestüt Marbach Nations Cup U.S. Team will not receive funding.

USEF will cover the National Federation fee and FEI Entry fee for the Team.

PRE-TRAVEL INFORMATION

VISAS

U.S. citizens and non-E.U. nationals will need to complete the Entry/Exit System (EES) for all short-term stays in European countries. Registration and biometric data collection will be completed at a border control kiosk at the arrival airport. More information about EES can be found [here](#). It is the traveling individual's responsibility to check any visa requirements.

VACCINATIONS

In accordance with the CDC and USOPC recommendations, we advise that all Athletes, grooms, and traveling USEF support staff consider getting the new COVID vaccine now available against new strains as well as the seasonal flu vaccine. These vaccines can be administered at the same time. This is NOT a USOPC or USEF requirement, but it is highly recommended to protect our athletes, grooms, and all Team members. Please note it takes approximately two (2) weeks to maximize immunity.

TRAVEL INFORMATION

EQUINE TRANSPORTATION

It is the Athlete's responsibility to organize their horse's travel to the Event. Christina Vaughn is available for assistance.

USA to GER: Dutta Horse Transport Inc. is the preferred USEF vendor for horse flights within the continental United States and to Europe.

- [Website](#)
- Phone: +1 (914) 276 3880
- Email: info@timdutta.com

Ground Transportation: Gelissen's Horse Transport is the preferred USEF vendor for ground transportation within continental Europe.

- [Website](#)
- Phone: +31 (0)46 43 73 574
- Email: info@horse-transport.nl

GER to USA: Guido Klatte GmbH & Co.KG is the preferred USEF vendor for horse flights departing Italy.

- [Website](#)
- Phone: +49 (0) 44 72 / 94 00 70
- Email: guido@gklatte.de

Hay/Bedding: Please refer to the FEI Schedule for hay/bedding that is available at the venue.

Disclaimer: This Playbook is a resource produced by the USEF Eventing Department. Please visit the event's [FEI Schedule](#) for the most up to date information.

HUMAN TRANSPORTATION

All athletes, grooms, and owners are responsible for booking their own travel itinerary. Below is a list of recommended airports to Gestüt Marbach.

Stuttgart Airport (STR) will be the recommended airport for athletes, owners, and grooms. STR has four terminals, and both operate international and domestic flights. It is approximately 33.4 miles (50 minutes) from the competition venue.

HUMAN ACCOMMODATION

There are many local accommodation options. Below is a non-extensive list of nearby hotels. Recommendations from the event can also be found [here](#). It is the traveling individual's responsibility to book their accommodation.

Requests for groom's accommodation must be sent with the entries.

Please refer to the [FEI Schedule](#) for information on lorries and/or caravans.

Hotel	Website	Distance
Gasthof zum Lamm	Click here	2.1 mi
Hotel Gasthof Herrmann	Click here	5.0 mi
Biohotel-Restaurant Rose	Click here	5.7 mi
Hotel Speidel's Braumanufaktur	Click here	4.1 mi
Biosphärenhotel Graf Eberhard	Click here	12.6 mi

CAR SERVICE INFORMATION

Public Transport: There is public transport in Gestüt Marbach which primary utilizes trains. There is a train station near the competition entrance called, Marbach(b Münsingen)

Taxi: Taxis use meters calculated by distance and time.

Rental Vehicles: For automatic vehicles, it is recommended to book a rental car with a large rental agency.

USA EVENTING GUIDE TO TRAVELING OVERSEAS

To view the USA Eventing Guide to Traveling Overseas click [here](#).

ACCREDITATION

Please review the [FEI Schedule](#) for the most up-to-date information on available accreditations.

Disclaimer: This Playbook is a resource produced by the USEF Eventing Department. Please visit the event's [FEI Schedule](#) for the most up to date information.

APPAREL

As an Untargeted Nations Cup, athletes, grooms, and owners will not receive horse or human apparel from USEF.

TICKETS

Tickets will not be sold for spectators to attend the event.

VENUE

The equestrian venue is northeast of the center of Rome.

The venue address is **Gestütshof 1, 72532 Gomadingen, Germany**

STABLES

Stable boxes are 3m x 3m.

TACK ROOMS

Tack rooms are available on request. It is the athlete's responsibility to coordinate. To make the request, email annafecke@gmail.com.

COMPETITION SCHEDULE

The full schedule for the Gestüt Marbach Nations Cup and Horse Trials can be found [here](#).

TEAM STAFF

As an Untargeted Nations Cup, Eventing Team Staff are not available for the duration of the competition.

SAFE SPORT, CODE OF CONDUCT, & CLEAN SPORT

Similar to any USEF licensed Event, SafeSport, the USEF Code of Conduct and Clean Sport must be abided by at all times.

Click [here](#) for SafeSport Information

Click [here](#) for USEF Code of Conduct

Click [here](#) for Clean Sport Information

HORSE

Once a horse is named to a team all communication regarding treatments and medications is to be directed to the team veterinarian. No medications can be transported with the horses.

Disclaimer: This Playbook is a resource produced by the USEF Eventing Department. Please visit the event's [FEI Schedule](#) for the most up to date information.

ATHLETE

Once an Athlete is named to a Team it is important that any Therapeutic Use Exemptions (TUEs) are up to date and with the Athlete at all times. If there are any questions regarding medications please reach out to Steven Morrissey (smorrissey@usef.org) or Dr. Mark Hart (markvhart@gmail.com).

PRESS & MEDIA

SOCIAL MEDIA

Social media can be a great advantage for athletes, but it can also be detrimental to the Team and to the environment. Please familiarize yourself with the policies below.:

The FEI Social Media policy can be found [here](#).

The USEF Social Media policy can be found [here](#).

If you have any questions about the utilization of social media during the Nations Cup, please contact Sr. Director Social Media & Sport Communications, Carly Weilminster (cweilminster@usef.org).

HOSPITALS & EMERGENCY SERVICES

Name	Address	Phone
Kreiskliniken Reutlingen - Albklinik Münsingen	Lautertalstraße 47, 72525 Münsingen, Germany	+49 7381 1810
Herr Werner Traub	Stuttgarter Str. 100, 72574 Bad Urach, Germany	+49 7381 1817514
Hospital at Steinenberg District Hospital Reutlingen	Steinenbergstraße 31, 72764 Reutlingen, Germany	+49 7121 2000

Italian Emergency Services – 112

INCIDENT MANAGEMENT GUIDELINES

In general, Marbach, Germany is a safe area for its residents and visitors. However, security perception changes greatly by district. If you have any doubts or need to report an incident, you can rely on the police.

Responsible care should be exercised when traveling throughout Germany. There is a normal level of crime in Marbach, but it varies by district. Travelers should keep valuables out of sight and be aware of their surroundings. Avoid isolated areas when on foot, especially after dark. It is recommended to only use a trusted taxi or an app-based taxi service. Do not hail a taxi on the street.

Disclaimer: This Playbook is a resource produced by the USEF Eventing Department. Please visit the event's [FEI Schedule](#) for the most up to date information.

Assailants usually target victims for their smartphones, wallets, or purses. If confronted by someone with a weapon, it is best not to resist.

It is best to use ATMs inside banks instead of ATMs that are more accessible to passers-by and all banks advise customers to cover ATM keypads with their hands when entering codes. When making credit card transactions, travelers should expect the vendor to use a credit card reader in their presence.

There is a threat of low-level crime such as mugging and theft. Security is not a worry, but all should be aware and take realistic precautions.

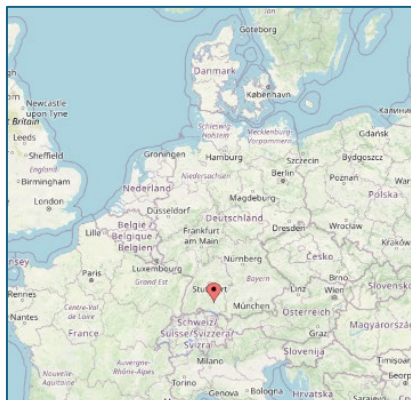
Security is the responsibility of everybody. However, security concerns must not be allowed to prevent athletes from concentrating on preparing and competing their horses. Good security is the application of common sense.

The key to good security is vigilance. Be aware of what is happening around you and always pay attention to anything that appears unusual or out of place. This includes people who appear nervous about their surroundings.

- Make a copy of your passport and travel documents and leave the original in a safe place.
- Always travel in groups.
- Do not overtly wear expensive jewelry.
- Keep your phone hidden.
- Do not carry excessive amounts of cash or credit cards if you do not need them.
- If you are in a vehicle in standstill traffic with the windows rolled down, keep phones and other possessions low and away from windows and be mindful of people walking through the traffic.
- Do not approach unattended bags, cases, or packages – report them.
- Do not accept packages from anyone, the contents of which are unclear.
- Do not advertise where members of Team USA are staying.
- If you are out in the evening and you become aware of increased police activity, leave the area immediately.
- If you see an incident involving the police, do not get involved. Do not play the good Samaritan.
- Avoid wearing Team USA kits outside protected areas.

TELEPHONE NUMBER FOR THE ITALIAN POLICE – 112

ABOUT MARBACH



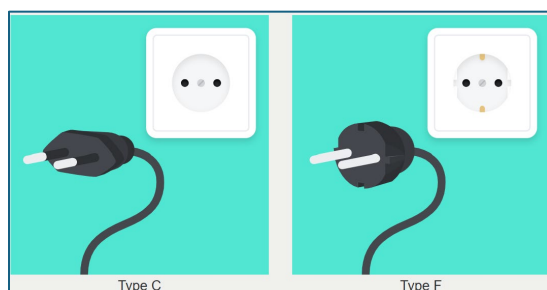
Marbach is in Baden-Württemberg which is a southern state in Germany in the Stuttgart region. It is a town on approximately 16,000 people and is known for being the birthplace of German playwright, Friedrich Schiller. More information about Marbach can be found [here](#).

LANGUAGE

German is the official language and most widely spoken language in Germany, which over 95% of the population speak. About 56% of the German population speak English as a second language.

ELECTRICAL

Power in Germany operates on a 230-volt current and a 50 hertz frequency. Electricity will be supplied through a Type C (two round pins), and Type F (two round pins with two earth clips).



TELEPHONES, WI-FI, AND INTERNET ACCESS

Cellphone reception is typically good. Most of the country is covered with 5G systems. Contact your phone provider for more information on Sim Cards and International Data Plans.

WEATHER

Average weather for March

- High Temperature: 62°F
- Low Temperature: 46°F
- Rainfall: 2.55"
- Humidity: 80%

Disclaimer: This Playbook is a resource produced by the USEF Eventing Department. Please visit the event's [FEI Schedule](#) for the most up to date information.

Suggested Clothing: May in Germany can see chilly mornings and evenings with warmer days. It is recommended to bring layers and at least one waterproof jacket in case of a rainy day.

FOOD AND LOCAL RESTAURANTS

While tap water is considered safe to drink in Germany, it is best practice to utilize bottled water instead. Stay away from raw foods and un-bottled drinks, unless in a reputable restaurant as a precaution.

German cuisine is known for being hearty meals with many different flavors. A large amount of their cuisine includes multiple different types of meats, sausages, and sides.

Some popular dishes include:

- Sauerbraten (pot roast)
- Schnitzel (meat cutlet breaded and pan-fried)
- Bratwurst (ground pork sausage)
- Currywurst (fried pork sausage)
- Bavarian Potato Salad
- Pretzel
- German Beed Rouladen (rolled meat)

Restaurant	Phone Number	Address
Gestütsgasthof Marbach	+49 7385 719	Am Dolderbach 15, 72532 Gomadingen, Germany
Pizzeria La Taverna	+49 7385 969088	Schelmenbühl 7, 72532 Gomadingen, Germany
Hirsch	+49 7385 427	Lautertalstraße 59, 72532 Gomadingen, Germany
Gaststätte Burren - Siegfried Rapp	+49 7385 426	Talstraße 34, 72532 Gomadingen, Germany
Albfetz	+49 7381 7269242	Auinger Weg 39, 72525 Münsingen, Germany

LOCAL BUSINESS HOURS

Office hours are Monday through Friday from approximately 8:00 a.m. to 4:00 p.m. or 9:00 a.m. to 5:00 p.m.

Banks are typically open 8:30 a.m. to 4:00 p.m. on weekdays with the exception of Thursday when most are open until 5:30 or 6:30 p.m.

Shopping centers are open Monday through Saturday and are closed on Sundays except for some types of stores such as bakeries, and cafes. The hours of operation can widely range depending on store type.

Disclaimer: This Playbook is a resource produced by the USEF Eventing Department. Please visit the event's [FEI Schedule](#) for the most up to date information.

GETTING AROUND THE CITY

There are apps that can be utilized in Marbach to request a vehicle such as Uber, Lyft, Ola, Didi

The advised and safest method of travel is by taxi or car arranged by a hotel.

CURRENCY AND EXCHANGE

The Euro (EUR) is the official currency of Germany. The symbol for the Euro is €. There are different currency exchange services available in Aachen such as Aachener Bank or Sparkasse Aachen.

Currency slang includes but is not limited to:

- Money – “Kohle”
- €5.00 – “Fünfer”
- €10.00 – “Zehner”
- €20.00 – “Zwanni”
- €50.00 – “Fuffi”
- €100.00 – “Hunni”

CREDIT CARDS

Major credit cards are widely accepted. Use of debit cards is widespread, although many stores impose a minimum per debit card purchase, and service charges may apply.

Money can be exchanged at the airport, exchange houses or banks.

TIPPING

Restaurants: Tipping is customary at sit-down restaurants in Germany at a 10% - 15% rate.

Transport: Tipping taxi drivers is not required but considered a kind gesture. A common tip is 10%.

Hotels: Tipping in hotels is customary but not required at a 10% - 20% rate.

TRAVELERS CHECKS

Very few places will accept travelers checks in Germany. It is best to use an ATM card at the ATM locations available in Marbach in the absence of cash.