

LUHMÜHLEN HORSE TRIALS

Westergellersen, GER

JUNE 12-15, 2025

CCI5*



*Disclaimer: This Playbook is a resource produced by the USEF Eventing Department.
Please visit the event's [official website](#) for the most up to date information.*



THIS PLAYBOOK IS PRODUCED BY THE USEF EVENTING DEPARTMENT.

USEF – United States Equestrian Federation
USET – United States Equestrian Team Foundation
USADA – United States Anti-Doping Agency

*Disclaimer: This Playbook is a resource produced by the USEF Eventing Department.
Please visit the event's [official website](#) for the most up to date information.*

Table of Contents

ENTRIES.....	5
PRE-TRAVEL INFORMATION	5
VISAS	5
VACCINATIONS	5
TRAVEL PLANS.....	5
EQUINE TRANSPORTATION.....	5
HUMAN TRANSPORTATION	6
HUMAN ACCOMODATION.....	6
CAR SERVICE INFORMATION	7
USA EVENTING GUIDE TO TRAVELING OVERSEAS	7
ACCREDIATION	7
APPAREL.....	7
USEF HORSE & HUMAN APPAREL POLICY.....	7
HOSPITALITY.....	7
TICKETS & PARKING.....	7
VENUE.....	7
STABLES	8
TACK ROOMS.....	8
COMPETITION SCHEDULES.....	8
TEAM STAFF	8
SAFE SPORT, CODE OF CONDUCT, & CLEAN SPORT	8
PRESS & MEDIA.....	9
SOCIAL MEDIA.....	9
HOSPITALS & EMERGENCY SERVICES	9
INCIDENT MANAGEMENT GUIDELINES	9
ABOUT WESTERGELLERSEN.....	11

*Disclaimer: This Playbook is a resource produced by the USEF Eventing Department.
Please visit the event's [official website](#) for the most up to date information.*

LANGUAGE	11
ELECTRICAL.....	11
TELEPHONES, WI-FI, AND INTERNET ACCESS.....	12
WEATHER	12
FOOD AND DRINK.....	12
EATING	12
LOCAL RESTAURANTS	12
LOCAL BUSINESS HOURS	13
GETTING AROUND THE CITY.....	13
CURRENCY AND EXCHANGE	13
CREDIT CARDS	14
TIPPING	14
TRAVELERS CHECKS	14

*Disclaimer: This Playbook is a resource produced by the USEF Eventing Department.
Please visit the event's [official website](#) for the most up to date information.*

CCI5*-L: LONGINES LUHMÜHLEN HORSE TRIALS

US EQUESTRIAN PLAYBOOK

INTRODUCTION

The aim of the Playbook is to give those that are attending the Longines Luhmühlen Horse Trials (GER) CCI5*-L an understanding of the event and the logistics that go with making the trip to Westergellersen, Germany. As a CCI5*-L. Please note that the individual athletes competing will not receive funding, apparel, Team Staff support, or expense reimbursements.

As with any CCI5*-L, Luhmühlen will have its challenges and differences from past and other 5* events. The emphasis must be on ensuring athletes, horses, and grooms can perform their very best. A performance environment should be maintained and always keep in mind that even as a non-Team competition, you are still representing the USA.

The competition venue is approximately 1 hour south of Hamburg and 90 minutes west of Bremen. This event does host the additional CCI4*-S level. Please review the published [FEI Schedule](#) for the available divisions and their restrictions.

This playbook contains helpful information for attending this event. Please also familiarize yourself with the [FEI Schedule](#) and remember to check in at the show office upon arrival for the most up-to-date information.

We are continually receiving updates and new information so this playbook can never cover all the details. The primary point of contact for the Longines Luhmühlen Horse Trials and their contact information can be found [here](#).

PLEASE READ THIS PLAYBOOK AS IT CONTAINS IMPORTANT INFORMATION ABOUT TRAVEL PLANNING, CLIMATE, AND ACCOMMODATIONS.

Please contact Christina if you have any questions, observations, or suggestions as to how we can optimize the support of the athletes, grooms, and horses.

Good luck to all!



Christina Vaughn
Director, Eventing Elite Programs
T: +1 (859) 225-6917
E: cvaughn@usef.org

*Disclaimer: This Playbook is a resource produced by the USEF Eventing Department.
Please visit the event's [official website](#) for the most up to date information.*

ENTRIES

An FEI Entry is required to compete at the Longines Luhmühlen Horse Trials. Athletes must submit the FEI Entry in order to be entered into the FEI Entry System to compete as an individual at any FEI competition, whether in the U.S. or abroad. The FEI Entry process is managed by US Equestrian Athlete Services.

Entries directly with the competition will also need to be completed. See the [FEI Schedule](#) for complete information.

PRE-TRAVEL INFORMATION

VISAS

Due to start in 2025, U.S. citizens and non-E.U. nationals will need to complete The Entry/Exit System (EES) for all short-term stays to European countries. Registration and biometric data collection will be completed at a border control kiosk at the arrival airport. More information about EES can be found [here](#). It is the traveling individual's responsibility to check any visa requirements.

VACCINATIONS

In accordance with the CDC and USOPC recommendations, we advise that all Athletes, grooms, and traveling USEF support staff consider getting the new COVID vaccine now available against new strains as well as the seasonal flu vaccine. These vaccines can be administered at the same time. This is NOT a USOPC or USEF requirement but highly recommended to protect our athletes, grooms, and all Team members. Please note it takes approximately two (2) weeks to maximize immunity.

TRAVEL PLANS

EQUINE TRANSPORTATION

USA to GER: Dutta Horse Transport Inc. is the preferred USEF vendor for horse flights within the continental United States and to Europe.

- [Website](#)
- Phone: +1 (914) 276 3880
- Email: info@timdutta.com

*Disclaimer: This Playbook is a resource produced by the USEF Eventing Department.
Please visit the event's [official website](#) for the most up to date information.*

Ground Transportation in GER: Gelissen's Horse Transport is the preferred USEF vendor for ground transportation within continental Europe.

- [Website](#)
- Phone: +31 (0)46 43 73 574
- Email: info@horse-transport.nl

GER to USA: Guido Klatte GmbH & Co.KG is the preferred USEF vendor for horse flights departing Germany.

- [Website](#)
- Phone: +49 (0) 44 72 / 94 00 70
- Email: guido@gklatte.de

Hay/Bedding: Please refer to the FEI Schedule for hay/bedding that is available at the venue.

HUMAN TRANSPORTATION

All Athletes, Grooms, and Owners are responsible for booking their own travel itinerary. Below is a list of recommended airports to Westergellersen.

Hamburg Airport (HAM)

- 44.3 miles (approximately 1 hour) from the competition venue.

Bremen Airport (BRE)

- 82.6 miles (approximately 1.5 hours) from the competition venue.

HUMAN ACCOMODATION

There are many local accommodation options. Below is a non-extensive list of nearby hotels. Recommendations from the event can also be found [here](#).

Hotel	Website	Distance
Rüter's Hotel & Restaurant	Click here	2.7 mi
Akzent Hotel Wassermühle Heiligenthal – Lüneburger Heide	Click here	6.6 mi
Egestorfer Hof	Click here	7.7 mi
Holiday Inn Express Hamburg South	Click here	9.8 mi
Gasthof Vossbur	Click here	10.3 mi
Hotel Lüneburg Süd – Motel Lüneburg Verwaltungs GmbH	Click here	10.6 mi
DORMERO Hotel Altes Kaudhaus Lüneburg	Click here	16.6 mi

*Disclaimer: This Playbook is a resource produced by the USEF Eventing Department.
Please visit the event's [official website](#) for the most up to date information.*

CAR SERVICE INFORMATION

Public Transport: There is public transport in Salzhausen, Germany which utilizes both buses and trains. The closest bus stop to the competition venue is approximately a 1 mile (15-20 minute) walk.

Taxi: Taxis use meters calculated by distance and time.

Rental Vehicles: For automatic vehicles, it is recommended to book a rental car with a large rental agency.

USA EVENTING GUIDE TO TRAVELING OVERSEAS

To view the USA Eventing Guide to Traveling Overseas click [here](#).

ACCREDITATION

Please review the [FEI Schedule](#) for the most up to date information on available accreditations.

APPAREL

USEF does not provide human or horse apparel for CCI5* events.

USEF HORSE & HUMAN APPAREL POLICY

The USEF Horse & Human Apparel Policy can be viewed [here](#).

HOSPITALITY

Hospitality options offered for the Longines Luhmühlen Horse Trials can be found [here](#).

TICKETS & PARKING

All spectators must purchase tickets. Information on tickets including how to purchase can be found [here](#).

VENUE

The Longines Luhmühlen Horse Trials is located on the grounds of Mitterlatler Spectaculum Luhmühlen in Westergellersen, Germany. The venue will have the usual

*Disclaimer: This Playbook is a resource produced by the USEF Eventing Department.
Please visit the event's [official website](#) for the most up to date information.*

first-aid stations, a mixed zone where interviews can be held, a sports information desk, medical facilities, doping control facilities and Wi-Fi access.

There are many shopping opportunities including a Flea Market and food and beverage options located throughout the venue.

The venue address is **Westergellerser Heide, 21394 Westergellersen Germany**

STABLES

Stable boxes are 3m x 3m. Power supply has to be ordered and paid for with the entries.

TACK ROOMS

Tack rooms are available upon request when completing the stabling form. It is the Athlete's responsibility to coordinate with their entry.

COMPETITION SCHEDULES

The full schedule for the Longines Luhmühlen Horse Trials can be found [here](#).

TEAM STAFF

As a non-team competition, the Eventing Team Staff are not available.

SAFE SPORT, CODE OF CONDUCT, & CLEAN SPORT

Similar to any USEF licensed Event, SafeSport, the USEF Code of Conduct and Clean Sport must be abided by at all times.

Click [here](#) for SafeSport Information

Click [here](#) for USEF Code of Conduct

Click [here](#) for Clean Sport Information

*Disclaimer: This Playbook is a resource produced by the USEF Eventing Department.
Please visit the event's [official website](#) for the most up to date information.*

PRESS & MEDIA

SOCIAL MEDIA

Social media can be a great advantage for the Athletes, but it can also be detrimental to the environment. Please familiarize yourself with the policies below.:

The FEI Social Media policy can be found [here](#).

The USEF Social Media policy can be found [here](#).

If you have any questions about the utilization of social media during the Event, please contact Sr. Director Social Media & Sport Communications, Carly Weilminster (cweilminster@usef.org).

HOSPITALS & EMERGENCY SERVICES

Name	Address	Phone
Städtisches Klinikum Lüneburg	Bögelstraße 1, 21339 Lüneburg, Germany	+49 4131 770
Heidekreis-Klinikum GmbH Krankenhaus Soltau	Oeninger Weg 30, 29614 Soltau, Germany	+49 5191 6020

German Emergency Services – 112

INCIDENT MANAGEMENT GUIDELINES

In general, Westergellersen, Germany is a safe area for its residents and visitors. However, security perception changes greatly by district. If you have any doubts or need to report an incident, you can rely on the Police who are constantly patrolling the streets.

Responsible care should be exercised when traveling throughout Germany. There is a normal level of crime, but it varies by district. In the higher-income areas frequented by tourists, petty theft is the most common concern. Travelers should keep valuables out of sight and be aware of their surroundings. Avoid isolated areas when on foot, especially after dark. It is recommended to only use a trusted taxi or an app-based taxi service. Do not hail a taxi on the street.

Assailants usually target victims for their smartphones, wallets, or purses. If confronted by someone with a weapon, it is best not to resist.

*Disclaimer: This Playbook is a resource produced by the USEF Eventing Department.
Please visit the event's [official website](#) for the most up to date information.*

It is best to use ATMs inside banks instead of ATMs that are more accessible to passers-by and all banks advise customers to cover ATM keypads with their hands when entering codes. When making credit card transactions, travelers should expect the vendor to use a credit card reader in their presence.

Security is the responsibility of everybody. However, security concerns must not be allowed to prevent athletes from concentrating on preparing and competing their horses. Good security is the application of common sense.

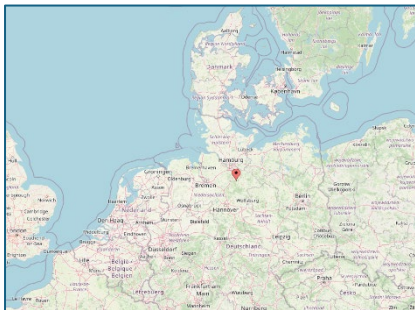
The key to good security is vigilance. Be aware of what is happening around you and always pay attention to anything that appears unusual or out of place. This includes people who appear nervous about their surroundings.

- Make a copy of your passport or real ID and travel documents and leave the original in a safe place.
- Always travel in groups.
- Do not overtly wear expensive jewelry.
- Keep your phone hidden.
- Do not carry excessive amounts of cash or credit cards if you do not need them.
- If you are in a vehicle in standstill traffic with the windows rolled down, keep phones and other possessions low and away from windows and be mindful of people walking through the traffic.
- Do not approach unattended bags, cases or packages – report them.
- Do not accept packages from anyone, the contents of which are unclear.
- Do not advertise where you are staying.
- If you are out in the evening and you become aware of increased police activity, leave the area immediately.
- If you see an incident involving the police, do not get involved. Do not play the good samaritan.

TELEPHONE NUMBER FOR THE GERMAN POLICE – 112

*Disclaimer: This Playbook is a resource produced by the USEF Eventing Department.
Please visit the event's [official website](#) for the most up to date information.*

ABOUT WESTERGELLERSEN



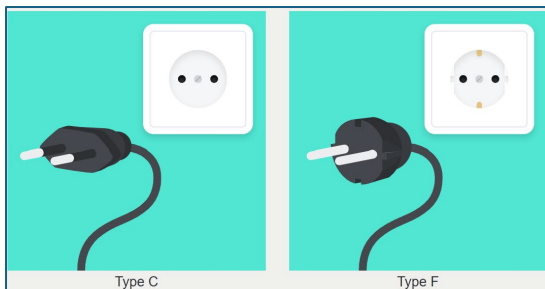
Located in the northern region in the district of Lüneburg, in Lower Saxony, Westergellersen is home to only 2,296 people. More information about Lüneburg can be found [here](#).

LANGUAGE

German is the official language and most widely spoken language in Germany, which over 95% of the population speak. About 56% of the German population speak English as a second language.

ELECTRICAL

Power in Germany operates on a 230-volt current and a 50 hertz frequency. Electricity will be supplied through a Type C (two round pins), and Type F (two round pins with two earth clips).



*Disclaimer: This Playbook is a resource produced by the USEF Eventing Department.
Please visit the event's [official website](#) for the most up to date information.*

TELEPHONES, WI-FI, AND INTERNET ACCESS

Cellphone reception is typically good. Most of the country is covered with 5G systems. Contact your phone provider for more information on Sim Cards and International Data Plans.

WEATHER

Average weather for May

- High Temperature: 67°F
- Low Temperature: 52°F
- Rainfall: 2.95"
- Humidity: 67%

Suggested Clothing: Summertime sees the most rain of the year for Germany and can remain on the chilly side throughout the day. It is recommended to bring layers and at least one waterproof jacket.

FOOD AND DRINK

While tap water is considered safe to drink in Germany, it is best practice to utilize bottled water instead. Stay away from raw foods and un-bottled drinks, unless in a reputable restaurant as a precaution.

EATING

German cuisine is known for being hearty meals with many different flavors. A large amount of their cuisine includes multiple different types of meats, sausages, and sides.

Some popular dishes include:

- Sauerbraten (pot roast)
- Schnitzel (meat cutlet breaded and pan-fried)
- Bratwurst (ground pork sausage)
- Currywurst (fried pork sausage)
- Bavarian Potato Salad
- Pretzel
- German Beef Rouladen (rolled meat)

LOCAL RESTAURANTS

There are many local restaurant options and below is a non-extensive list.

*Disclaimer: This Playbook is a resource produced by the USEF Eventing Department.
Please visit the event's [official website](#) for the most up to date information.*

Restaurant	Address	Distance
Kalesche	Alte Dorfstraße 3, 21376 Salzhausen, Germany	1.3 mi
Zum Peekieker	Bruchweg 5, 21376 Salzhausen, Germany	1.4 mi
Lieblingscafe und Restaurant	Hauptstraße 5, 21376 Salzhausen, Germany	2.5 mi
Restaurant 24	Lüneburger Str. 12, 21394 Kirchzellersen, Germany	4.5 mi

LOCAL BUSINESS HOURS

Office hours are Monday through Friday from approximately 8:00 a.m. to 4:00 p.m. or 9:00 a.m. to 5:00 p.m.

Banks are typically open 8:30 a.m. to 4:00 p.m. on weekdays with the exception of Thursday when most are open until 5:30 or 6:30 p.m.

Shopping centers are open Monday through Saturday and are closed on Sundays except for some types of stores such as bakeries, and cafes. The hours of operation can widely range depending on store type.

GETTING AROUND THE CITY

There are apps that can be utilized in the district of Lüneburg to request a vehicle such as Uber, Lyft, Ola, Didi

The advised and safest method of travel is by taxi or car arranged by a hotel.

CURRENCY AND EXCHANGE

The Euro (EUR) is the official currency of Germany. The symbol for the Euro is €. There are different currency exchange services available in Lüneburg such as Volksbank Lüneburger Heide eG - Filiale Salzhausen and Sparkasse Lüneburg – ATM.

Currency slang includes but is not limited to:

- Money – “Kohle”
- €5.00 – “Fünfer”
- €10.00 – “Zehner”
- €20.00 – “Zwanni”
- €50.00 – “Fuffi”
- €100.00 – “Hunni”

*Disclaimer: This Playbook is a resource produced by the USEF Eventing Department.
Please visit the event's [official website](#) for the most up to date information.*

CREDIT CARDS

Major credit cards are widely accepted. Use of debit cards is widespread, although many stores impose a minimum per debit card purchase, and service charges may apply.

Money can be exchanged at the airport, exchange houses or banks.

TIPPING

Restaurants: Tipping is customary at sit-down restaurants in Germany at a 10% - 15% rate.

Transport: Tipping taxi drivers is not required but considered a kind gesture. A common tip is 10%.

Hotels: Tipping in hotels is customary but not required at a 10% - 20% rate.

TRAVELERS CHECKS

Very few places will accept travelers checks in Germany. It is best to use an ATM card at the many ATM locations available in Lüneburg in the absence of cash.