

FIGURE LEGENDS

Figure 1. Schematic representation of the production of prostaglandin from cyclooxygenase is inhibited by NSAID medications.

Figure 2. Diagram showing the importance of the lining of the gastrointestinal tract to help maintain host health by preventing the absorption of acid and microbes. NSAIDs can lead to the breakdown of this lining, leading to colic, weight loss, protein loss and in some cases diarrhea.

FIGURE 1

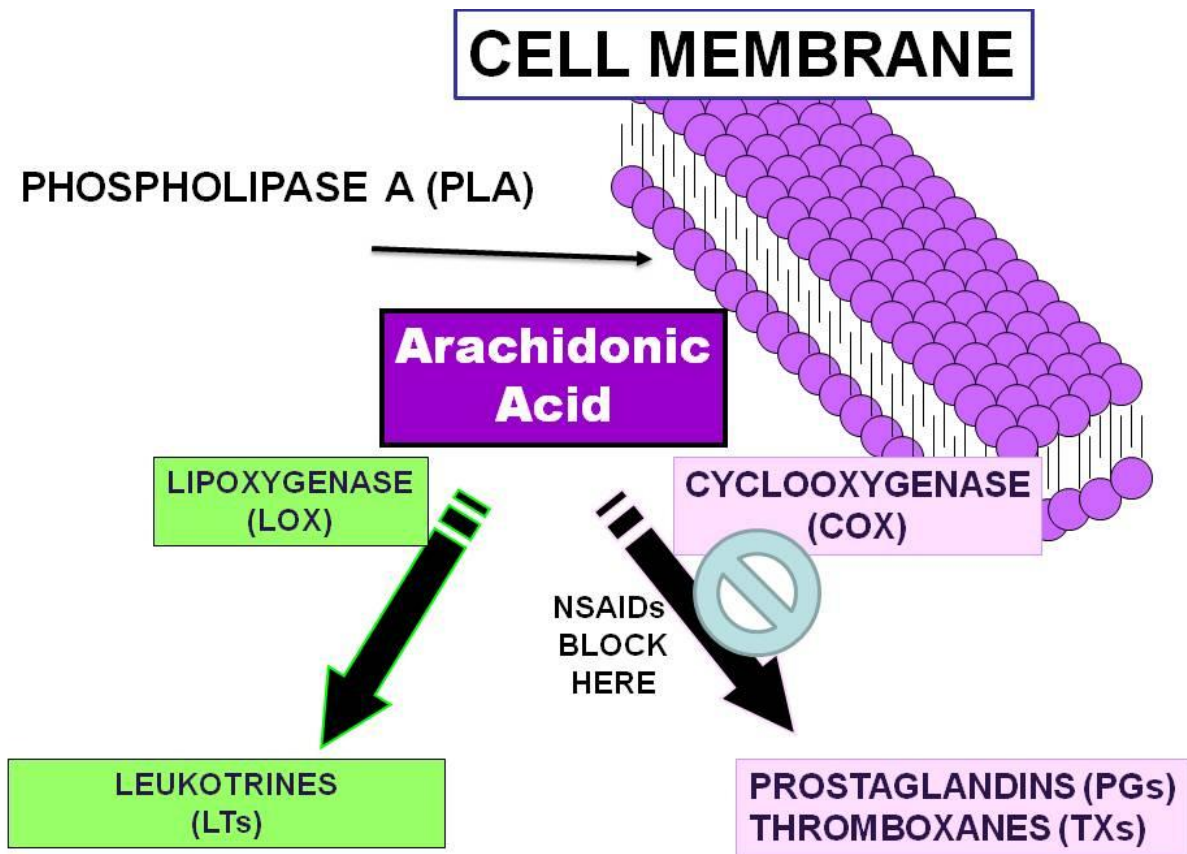


FIGURE 2

