

Saddlebred Horse Division



Class Specifications

Photos copyright Amanda Bassett

Important Points to Remember...

- A judge *must* order from the ring any unruly horse or ones whose actions threaten to endanger others.
- A judge *must* order from the ring any rider, driver, or handler who exhibits inappropriate or dangerous behavior, or whose actions would in any way threaten the safety of others.
- *This is a matter of both safety and fairness to other competitors.*



Line-up

- Exhibitors are required to continue in a clockwise direction to the line-up
- Judges are required to penalize entries that do not comply.

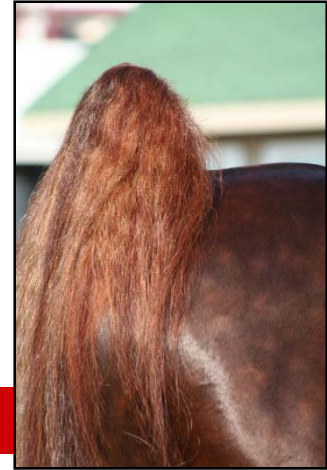


Soundness

- Horses must be serviceably sound.
- If the judge feels an entry should be disqualified due to soundness, the vet may be called as a consultant. If so, the vet's decision will be final.
- If the vet is not immediately available, the judge's decision as to the soundness of a horse shall be accepted for the purpose of excusing a horse from showing.



Tails



- Horses may be shown with unset tails in any class without penalty.
- Horses with *crooked* tails *must* be penalized.
- Horses with *extremely crooked* tails *must be severely penalized*, the same way that lack of conditioning, a rough coat, and other undesirable appearances are to be penalized.
- Gingering tails is not allowed in the show ring.



Low Backs

- For In-hand, harness, and classes which are stripped, any horse with an extremely low back *must be severely penalized.*



Different Judging Specifications



- Remember there are different specifications for each division, listed in order of importance.
- Consult the class specs for your division to see what criteria you will be judged on.



Open divisions

- The **OPEN** horse should be the ultimate representative of the breed and as nearly perfect as possible.
- Should perform all gaits with animation, *brilliance* and extreme action at both ends.
- Performance is **paramount**.



Open classes judged on...

Performance

Presence

Quality

Manners

Conformation



Ladies divisions

- A **LADIES** horse should be outstanding in *refinement* and *elegance* with suitability of horse to rider taken into consideration.
- Expression is important and quality is a prime consideration.
- Gaits should be performed with brilliance on command.
- Horses should walk and stand quietly.
- Manners are **paramount**.



Ladies Classes judged on...

Manners

Quality

Presence

Performance

Conformation



Junior Exhibitor divisions

- A **JUNIOR EXHIBITOR'S** horse should be mannerly, willing and expressive with balanced action.
- Gaits should be performed with brilliance on command.
- Horse should walk and stand quietly.
- Manners are **paramount**.



Junior Exhibitor's classes judged on...

Manners

Performance

Presence

Quality

Conformation



Amateur and Owner divisions

- The **AMATEUR'S** and **OWNER'S** horse can be a bit stronger and perform in a **bolder** manner than a Ladies' or Junior Exhibitor's.
- More action and animation are desired.
- Less emphasis can be put on manners than in Ladies and Jr. Exhibitor classes.



Amateur and Owner classes judged on...

Manners

Performance

Presence

Quality

Conformation



Park Classes judged on...

Performance

Manners

Presence

Quality

Conformation



English Show Pleasure & Country Pleasure...

**75% Manners, Performance,
Presence, Quality**

25% Conformation



Performance Classes



Three Gaited Division

- Should be the epitome of beauty, brilliance, elegance, refinement and expression
- Gaits are collected, energy directed toward animation and precision
- Shown at the **animated walk, park trot, and canter**
 - **Park trot:**
 - Highly Collected
 - **Speed to be penalized**
 - Energy directed towards animation, not speed



Five Gaited Division

- Should possess beauty, brilliance, elegance and refinement
- Energy directed toward speed in an animated form
- Shown at the **animated walk, trot, slow gait, rack, and canter**
 - **Trot:**
 - Should show speed in form with control and balance
 - **Slow Gait:**
 - Highly collected, propulsion coming from behind
 - NOT A MEDIUM RACK



Five Gaited (cont)

– Slow Gait (cont)

- Executed slowly but with true and distinct precision
- **SPEED IS TO BE PENALIZED**
- High, lofty, brilliant and restrained denoting the style, grace and polish of the horse

– Rack:

- Smooth and highly animated
- Performed with great action and speed in a slightly unrestrained manner (must remain in form with a good headset)
- **TO BE PENALIZED-** any tendency to become trotty, pacey or hitchy gaited



Fine Harness Division

- Should possess all of the elegance and refinement of the ideal Saddlebred
- Energy directed toward animation rather than speed
- Should stand quietly in line-up but shall not be required to back
- Shown at the **animated walk, park trot,** and “**show your horse**” (exception: “show your horse” is not called for in Ladies, Jr. Exhibitor, Amateur, or Owners classes)
- **Speed will be penalized** at “show your horse”



Park Horse Division

- Should be stylish with finish and quality, well-mannered
- Should be animated and graceful in all gaits



Park Horse Division (cont)

- **Park Pleasure Division**
 - manners are **paramount**
 - Shown at **flat walk, trot, and canter**
- **Country Park Pleasure Division**
 - Must be obedient with prompt transitions
 - Must be asked to halt and stand quietly on the rail both ways of the ring
 - Shown at the **true flat walk, park trot, extended trot, and canter**



English Show Pleasure Division

- Horse has *less animation* than the 3-gaited, 5-gaited, or fine harness horse
- High, natural, free-moving action is desirable
- Manners and suitability as a Pleasure mount are **paramount**
- Light contact with mouth must be maintained
- Must stand quietly and back readily in line up
- **TO BE PENALIZED**: pulling, head tossing, laboring action, going sideways and tail switching



English Show Pleasure (cont)

- Shown at the **flat walk, trot, canter**, plus **slow gait** and **rack** in Five-Gaited classes
 - **Flat walk:**
 - Special emphasis placed on true, four beat relaxed walk
- **Show Pleasure driving classes:**
 - Shown at the **flat walk, trot**, and **extended trot**
 - **Extended trot:**
 - Faster, stronger and bolder with a fuller extension of stride to obtain desired speed



English Country Pleasure Division

- May be *less showy* than the Show Pleasure horse but should still be typical of the breed
- Easy, ground covering action is desired
- Manners and suitability as a Pleasure mount are **paramount**
- Transitions must be effortless, smooth and prompt
- Special emphasis is placed on a true, flat walk
- Must be asked to halt and stand quietly on the rail both ways of the ring



English Country Pleasure (cont)

- Must stand quietly and back readily in the line-up
- **TO BE PENALIZED**: pulling, head tossing, laboring action, going sideways and tail switching
- Shown at the **flat walk, trot, extended trot, and canter**
- **Country Pleasure Driving classes:**
 - Shown at the **flat walk, trot, and extended trot**



Western Division

- A less elevated head carriage should not be penalized, but poll must not be carried lower than the saddle horn
- Horse should have more **substance**, especially in the quarters
- Shown on a **reasonably loose rein** without undue restraint
- **Manners are paramount**, must have prompt, smooth transitions
- Special emphasis is placed on a true, flat walk
- Must halt and stand quietly on rail both ways



Western Division (cont)

- Must stand quietly and back readily in the line-up
- **TO BE PENALIZED:** pulling, head tossing, laboring action, going sideways and tail switching
- Shown at the **flat walk, jog-trot, and lope**
 - **Jog-trot:**
 - Rate of speed is just beyond flat walk
 - Should generate very little motion in the saddle
 - Action is free, easy, ground covering and uniform
 - **Lope:**
 - Neither too slow or too fast; easy and steady
 - Should be comfortable with definite three beat cadence



Remember to check specs

- Class specs differ with the different types of Western classes (Country Pleasure vs. Show Pleasure vs. Working Western, etc)
- Always check SB158

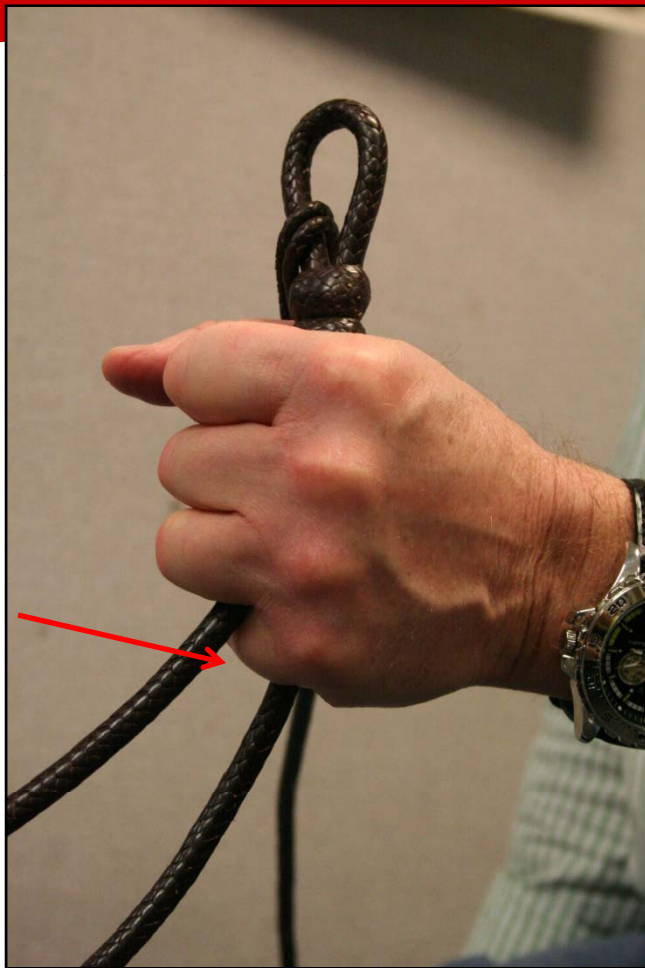


Romal Reins

- Riders hand is to be around reins
- No fingers allowed between reins
- May only rein with one hand and may not switch hands.



Illegal Rein holds for Romal Reins



Split Reins

- One finger is permitted between reins with the end of the reins falls on the side of the reining hand.



Hunter Country Pleasure Division

- Horse should be in a **LONGER** frame with lower neck carriage and a relaxed headset
- **High headed** horses and horses **behind the vertical MUST BE PENALIZED**
- Must give distinct appearance of being a pleasure to ride and display pleasurable and relaxed attitude
- Light contact with mouth must be maintained at all gaits
- Manners are **paramount**, must have prompt, smooth transitions
- Special emphasis is placed on a true, flat walk



Hunter Country Pleasure (cont)

- Must halt and stand quietly on rail both ways
- Must stand quietly and back readily in the line-up
- **TO BE PENALIZED:** pulling, head tossing, laboring action, going sideways and tail switching
- Shown at the **walk, trot, extended trot, canter, and hand gallop**
 - **Trot:** performed at medium speed with a free moving, ground-covering stride
 - **Extended trot:** shows definite lengthening of stride without a sense of racing or scurrying
 - **Hand gallop:** long, free, ground-covering stride, lengthening of stride must be shown (not just a fast canter)



Check your specs

- Class specs differ for each type of Hunter class
- Always check SB163

